

# *Strategic Approaches to Facilitate Graduate Completion*

---



Stacey Silverman, Ph.D.  
Assistant Vice Chancellor for Academic Planning and Policy

# Agenda



## The Texas A&M University System

Office of Academic Affairs  
Student Success  
Academic Policy and Planning



## THECB

Focus on Undergraduate Initiatives  
Research



## Educational Attainment

Lifetime Earnings  
Undergraduate Pipeline

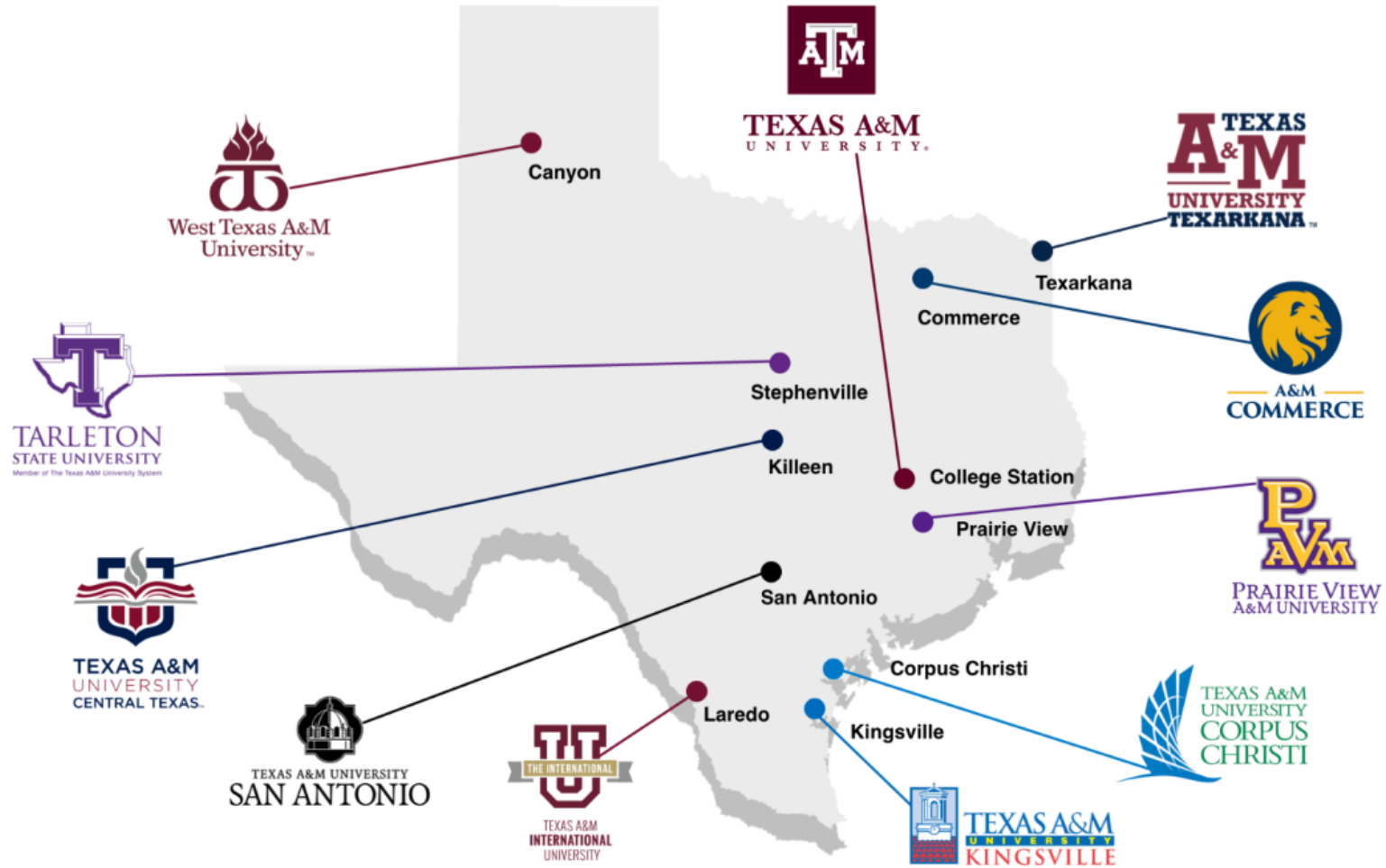


## A&M System

Student Success  
Partnership and Ongoing Efforts



# The Texas A&M University System



# The Texas A&M University System

THE TEXAS A&M  
UNIVERSITY SYSTEM

[HOME](#) ▾ | [ABOUT](#) | [REGENTS](#) | [CHANCELLOR](#) | [OFFICES](#) ▾ | [SSO](#) | [JOBS](#) | [CONTACT](#) 

## OFFICE OF ACADEMIC AFFAIRS

The A&M System Office of Academic Affairs provides leadership and support over academic programs, educational initiatives, academic policy, student affairs, digital learning and data analysis. The office also supports several special initiatives and provides guidance in the areas of collaboration and other outreach activities.



### **DR. JAMES R. HALLMARK, VICE CHANCELLOR FOR ACADEMIC AFFAIRS**

Dr. Hallmark advises and assists the Chancellor by providing executive leadership and direction in academic-related areas and initiatives. He oversees the academic program development process for A&M System members; ensures the development of quality measures for success; provides system-wide leadership on the academic technology initiatives; fosters communication and coordination between system members; and works with System members on identifying common issues and seeking solutions.

### **ACADEMIC AFFAIRS HOME**

- [Pre-K Initiative](#)
- [Councils, Committees, & Communities of Practice](#)
- [Academic Planning & Policy](#)
- [EmpowerU](#)
- [Student Success](#)
- [Awards & Recognition](#)
- [Office of Veteran Services](#)
- [Equal Opportunity and Diversity](#)
- [Contact Us](#)



# THECB established in 1963 to Coordinate



“The greatest risk you face is an institutionalized system, with each college or university grasping for its own ends without regard to the needs of the people of the whole state, and perhaps without being aware of those needs. But over the years in Texas, we have come to regard each college or university as a separate institution, striving independently for success. In many cases regarded locally as a boon to the economy, it struggles to be all things to all people, willing to do almost anything that will assure its getting larger – larger in enrollment, larger in buildings, larger in number and level of degrees offered, larger in number of graduates, larger in number of alumni. And it remains in constant danger of mediocrity...”

**John Connally**  
39th Governor of Texas



# Texas Higher Education Coordinating Board Members



**Fred Farias III, OD, FAAO**

Chair



**Donna N. Williams**

Vice Chair

Term Expires: August 31, 2023



**S. Javid Anwar**

Secretary of the Board

Term Expires: August 31, 2027



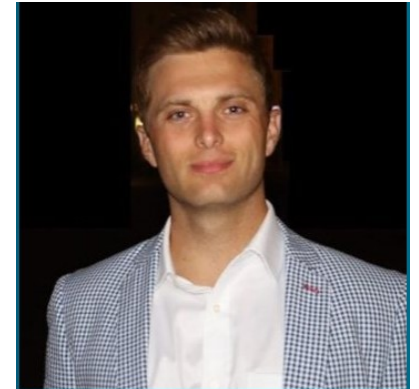
**Richard L. Clemmer**

Term Expires: August 31, 2023



**Daniel O. Wong**

Term Expires: August 31, 2027



**Cage M. Sawyers**

Student Representative

Term Expires: May 31, 2024



**Stacy A. Hock**

Term Expires: August 31, 2027



**Emma W. Schwartz**

Term Expires: August 31, 2025



**Ashlie A. Thomas**

Term Expires: August 31, 2025



**Welcome W. Wilson, Jr.**

Term Expires: August 31, 2023



# Texas Higher Education Coordinating Board Commissioner Keller

## **Harrison Keller, PhD**

### **COMMISSIONER OF HIGHER EDUCATION**



The Commissioner of Higher Education is appointed by the Board of the Texas Higher Education Coordinating Board and serves as the CEO of the agency. Dr. Keller came to the Coordinating Board from The University of Texas at Austin, where he served President Gregory Fennes as Deputy to the President for Strategy and Policy. Previously, he served as Vice Provost for Higher Education Policy and Research and founded the OnRamps and Texas OnCourse initiatives. Earlier in his career, he served as Senior Education Policy Advisor and Director of Research for Rep. Tom Craddick during his tenure as Speaker of the Texas House, and as a project director at UT Austin's Charles A. Dana Center.

Dr. Keller received his B.A. with honors from the University of Notre Dame, and went on to receive master's and doctoral degrees in philosophy from Georgetown University. He also served in the U.S. Navy Reserve as an intelligence officer. A native of the Texas Panhandle, Keller resides in Austin with his wife Gena and their three children.



# My Texas Future (mytexasfuture.org)

MY TX FUTURE   Find your future   Plan for school   Pay for school   Navigate your career   Log In

## LET'S BUILD YOUR FUTURE

Whether you want to go back to school or advance your career, My Texas Future shows you what's possible as well as how to achieve it. Find tools, resources, and advisor support specific to students just like you.

[Start your journey](#)





# My Texas Future – Career Explorer



MY TX FUTURE Find your future Plan for school Pay for school Navigate your career Log In

Home ▶ Find Your Future ▶ Career Explorer

## Career Explorer

Our Career Explorer allows you to find and compare careers based on demand in your area, salary, required education, and related skills.

Search careers Career fields County Median salary


More filters Show only in-demand careers

Viewing 5 of 1011 careers Sort by: Projected growth (high to low)



# My Texas Future – Program Explorer



MY  FUTURE

Find your future   Plan for school   Pay for school   Navigate your career   [Log In](#)

[Home](#) ▶ [Find Your Future](#) ▶ Program Explorer

## Program Explorer

Get a snapshot of degree and certificate programs across Texas. Filter by what's important to you to find the right fit.

[Sign in](#) to save your searches, preferences, and favorite programs.

Program search   Area of study   Degree/certificate type

Avg. tuition   Salary after graduation   Enter location   Any distance

[More Filters](#)    Only show programs that offer online courses





# Ask ADVi - askadvi.org



## Interested in getting started with ADVi?

Unsure of the steps to take to get to college? Have questions about the college application process, including how to apply for financial aid? ADVi can help!

### To get started, follow these steps:

1. Create a profile on [ApplyTexas](#).
2. Check "yes" to receiving messages from ApplyTexas and its partners on the College History page of your profile.
3. Start a freshmen application to a two- or four- year college in Texas.

After that, you should receive your first text from ADVi within a week! If you don't, make sure you've provided the right cell phone number in your ApplyTexas profile.

*Please note: you must be at least 13 years old to opt in to text ADVi.*

## What happens when you opt in to ADVi?

Once you opt in, you'll get a welcome text. This will include information about what ADVi can help with and [how ADVi will keep your information safe](#).

If you are in the process of applying to a college or university, ADVi will also reach out to you two to three times a week with helpful tips and information about the college going-process, reminders of important deadlines, and encouragement to keep pursuing your educational goals!

If you opted into ADVi through a phone number, you won't receive the messages mentioned above. But you're welcome to use ADVi to ask questions anytime.



[Home](#) [About](#) [FAQ](#) [Students](#) [Counselors](#)



## ABOUT THE VIRTUAL ADVISING PROJECT

The Texas Higher Education Coordinating Board developed the Virtual Advising Project – including a chatbot named **ADVi**, powered by **Mainstay** – to reach students with critical college access information via text message. Our team of trained advisors back up the chatbot and provide extra support for any student who needs it. [Learn more about the project.](#)

## LEARN MORE AND GET STARTED:



### Student Resources

Learn how ADVi works and how you can opt in to receive text-based support from ADVi and our team of virtual advisors! [Get started.](#)



### Counselor Info + Toolkit

Download free resources and get info about how ADVi can supplement the valuable work you do with your students every day. [Learn more.](#)



### Frequently Asked Questions

[Have questions? We have answers.](#) Get answers to the questions we hear most often from counselors, families, and students.



# Texas Transfer Framework

## TEXAS TRANSFER FRAMEWORK TIMELINE

2019-2021





# What is Texas Direct?



**Texas Direct is the state's effort to articulate seamless degree pathways between two- and four-year institutions.**

Students who complete the Texas Core Curriculum and Field of Study at any public two-year institution automatically qualify to receive an associate degree – the Texas Direct Transfer Degree. They are also qualified to transfer their courses as a block applied directly to their selected major.

## **The Fields of Study that are now part of Texas Direct:**

- [\\*Business Administration](#)
- [\\*Criminal Justice](#)
- [\\*Political Science](#)
- [Social Work](#)
- [\\*Sociology](#)

\*Revised as of July 2023 based upon submitted corrections



# THECB's Building a Talent Strong Texas

Texas must be a leading state in generating knowledge through basic and applied research and translating discoveries into innovations that benefit individual Texans' lives and drive economic development.

## Primary Indicators:

**GOAL:**  
**\$1 Billion**

Increase in annual private and federal research and development expenditures.

**GOAL: 7,500**

Research doctorates awarded annually by Texas institutions of higher education.

## Future indicators:

Measures of commercialization, knowledge transfer, and economic impact.



# THECB's Building a Talent Strong Texas

## Strategies:

Recruit highly distinguished researchers and world-class innovators to Texas universities through the governor's University Research Initiative and other programs, and provide support for universities to hire high-potential, early-career researchers.

Strengthen state research funding and programs to align with state priorities for university research and development.

Develop and mentor world-class future faculty for Texas institutions, emphasizing disciplines with high current or projected workforce demand (including nursing, software development, and data sciences), especially faculty from diverse backgrounds.



# THECB's Building a Talent Strong Texas

## Strategies:

Establish high-impact university research parks and improve research infrastructure at all research and emerging research universities, and develop incubator capabilities in two- and four-year colleges to support private-sector partnerships, innovation, and technology commercialization.

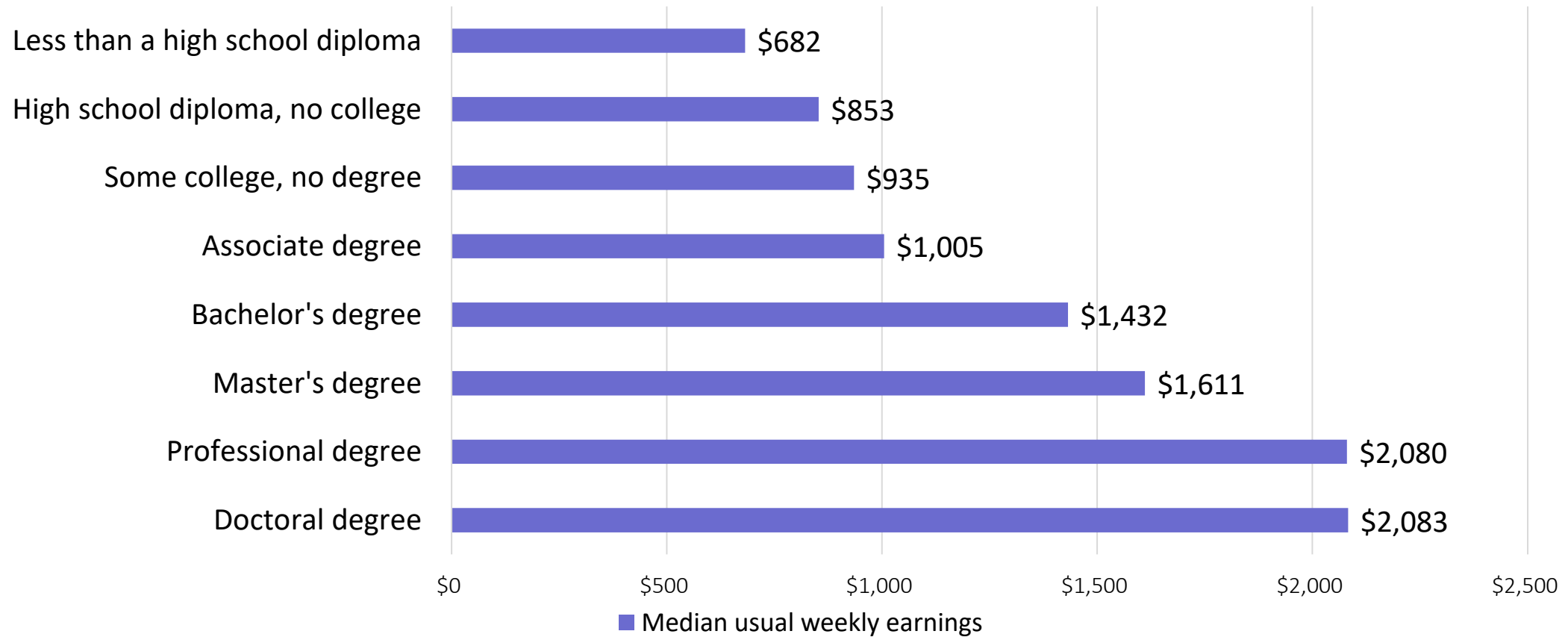




# Educational Attainment



# Earnings by Educational Attainment, 2022



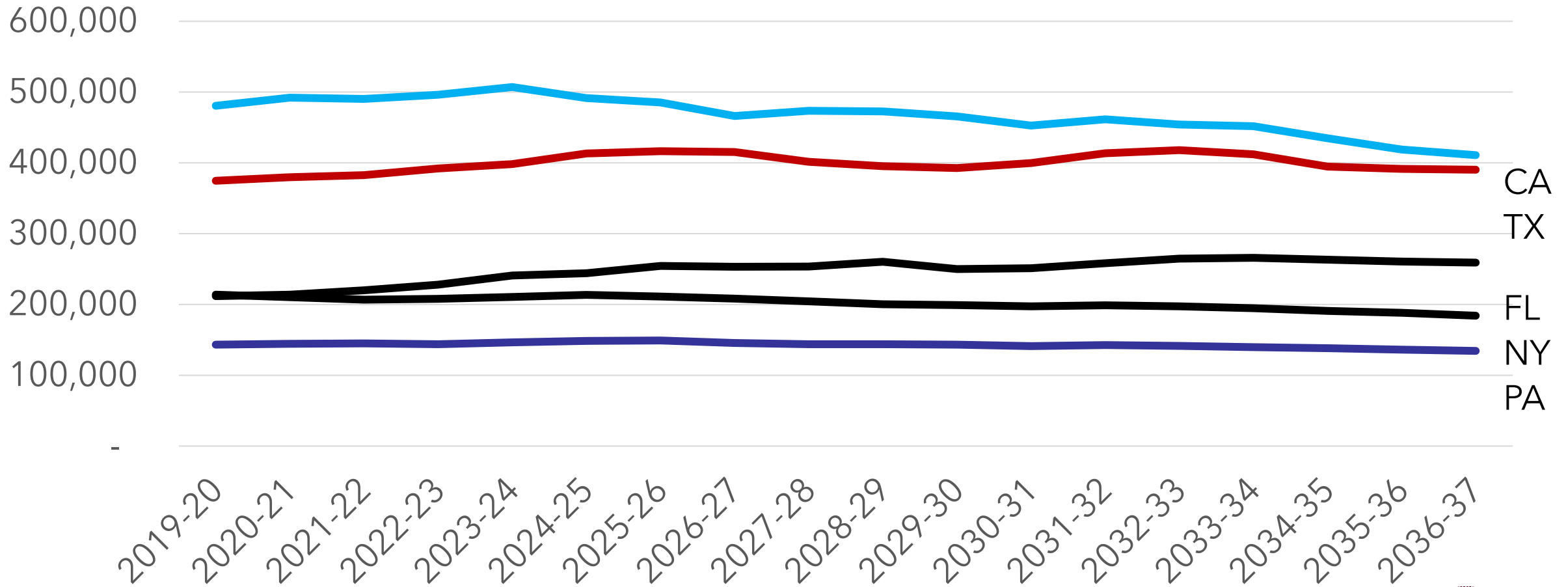
Note: Data are for persons aged 25 and over. Earnings are for full-time wage and salary workers.

Source: U.S. Bureau of Labor Statistics, Current Population Survey.

The Texas A&M University System



# High school graduations are projected to grow in Texas over the next 15 years



The Texas A&M University System



# THECB Student Success Planning and Innovation Grants

**THECB**  
**OERTX**

Discover ▾ Hubs ▾ Groups ▾ Learn More ▾ Add OER 🔍 🔔 Sign In/Register

**Student Success** Texas Student Success Program Inventory

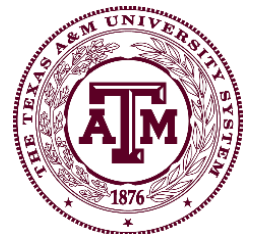
**THECB**  
**Student Success**  
**PROGRAM INVENTORY**

**Texas Student Success Program Inventory**

Explore student success programs and initiatives serving undergraduates at institutions throughout Texas

Search hub resources 🔍

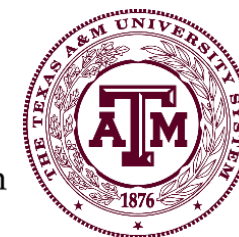
• Welcome to the Texas Student Success Program Inventory! | • Student Success Programs | • Student Success Programs by Institution | • News |  
• Research about Texas Student Success | • SSAP-IG Groups | • How to Submit New Programs & Update Existing Programs





# Student Success Grant -- Focus on Returning Students

Summer 2023	Completed		
	New Student	Persister	Total
University			
Central Texas	14	20	34
Commerce	5	12	17
Corpus Christi	7	29	36
Kingsville	3	6	9
Prairie View	0	0	0
San Antonio	4	39	43
International	0	0	0
Tarleton	0	5	5
Texarkana	8	9	17
<b>Grand Total</b>	<b>41</b>	<b>120</b>	<b>161</b>
NOTE: "Completed" excludes any students who might have taken partial courses and dropped before the actual end of the semester.			



# Student Success Grant -- Focus on Returning Students

Fall 2023	Applied	Admitted	Registered		Actively Enrolled		
University	Total	Total	New Student	Persister	New Student	Persister	Total
Central Texas	3	23	9	19	24	54	78
Commerce	7	18	1	0	17	19	36
Corpus Christi	6	12	4	2	34	53	87
Kingsville	4	13	0	0	25	17	42
Prairie View	1	4	0	0	3	5	8
San Antonio	13	15	0	2	24	55	79
International	0	1	0	0	5	0	5
Tarleton	2	0	0	1	0	11	11
Texarkana	6	0	0	0	15	31	46
<b>Grand Total</b>	<b>42</b>	<b>86</b>	<b>14</b>	<b>24</b>	<b>147</b>	<b>245</b>	<b>392</b>
NOTE: There is overlap between the registered and actively enrolled group of students.							

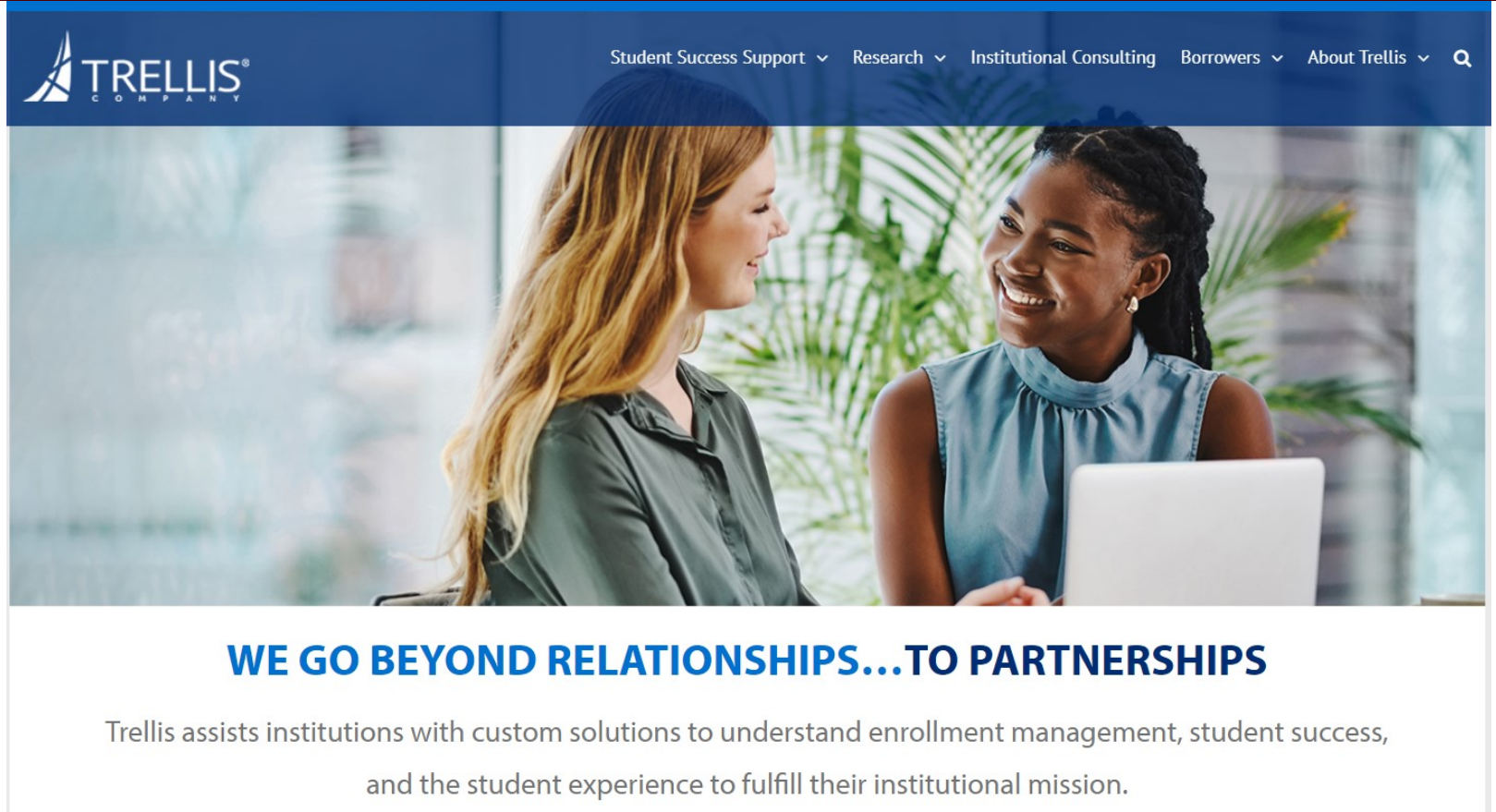


# Tech Assistance Provider via THECB

## Project Success Initiative

Trellis provides direct student assistance as well as capacity building (research, consulting, training) to help the institutions increase retention, graduation rates, financial literacy, and successful student loan repayment. Services are provided at no cost to the institutions.

## Student Financial Wellness Survey Project



The screenshot shows the Trellis Company website. The header is dark blue with the Trellis logo on the left and navigation links: 'Student Success Support', 'Research', 'Institutional Consulting', 'Borrowers', and 'About Trellis'. Below the header is a hero image of two women, one with long blonde hair and one with dark hair in braids, smiling and looking at a laptop. Below the image is the headline 'WE GO BEYOND RELATIONSHIPS...TO PARTNERSHIPS' in blue, followed by a sub-headline: 'Trellis assists institutions with custom solutions to understand enrollment management, student success, and the student experience to fulfill their institutional mission.'

# Partnerships to Advance Change





# Other Resources

- Bureau of Labor Statistics, Occupational Outlook Handbook <https://www.bls.gov/ooh/>
- Lightcast <https://kb.lightcast.io/en/>
- Department of State Health Services, Health Professions Fact Sheets  
<http://www.dshs.texas.gov/chs/hprc/health.shtm>
- Economic Development and Employer Planning System [www.edeps.org](http://www.edeps.org)
- National Center for Education Statistics, Integrated Post-Secondary Education Data System (IPEDS) <https://nces.ed.gov/> and <https://nces.ed.gov/ipeds/cipcode/>
- National Science Foundation, WebCASPAR: Integrated Science and Engineering Resources Data System <https://ncesdata.nsf.gov/webcaspar/>
- Texas Administrative Code  
[https://texreg.sos.state.tx.us/public/readtac\\$ext.ViewTAC?tac\\_view=4&ti=19&pt=1&ch=5](https://texreg.sos.state.tx.us/public/readtac$ext.ViewTAC?tac_view=4&ti=19&pt=1&ch=5)
- Texas Health Professions Regulatory Boards [www.hpc.texas.gov/agencies/](http://www.hpc.texas.gov/agencies/) (Health Professions)
- Texas Labor Market Information <https://texaslmi.com/>
- Texas Workforce Commission [www.twc.state.tx.us](http://www.twc.state.tx.us)



# Questions?



Contact information:

Dr. Stacey Silverman

Assistant Vice Chancellor for Planning and Policy

[ssilverman@tamus.edu](mailto:ssilverman@tamus.edu)

512-627-7505

